

# Installing the Connectivity\_Patch for the Xerox CX Print Server for the Xerox 700 Digital Color Press

## Version 2.0

### Problem description

The following XPIF attributes are not mapped when they are sent via an XPIF ticket from FreeFlow suite applications to the CX print server (CX700i):

- Quantity
- Sides Imaged
- Collation
- Output Location
- Rotation
- Black Overprint
- AntiAliasing
- Emulation

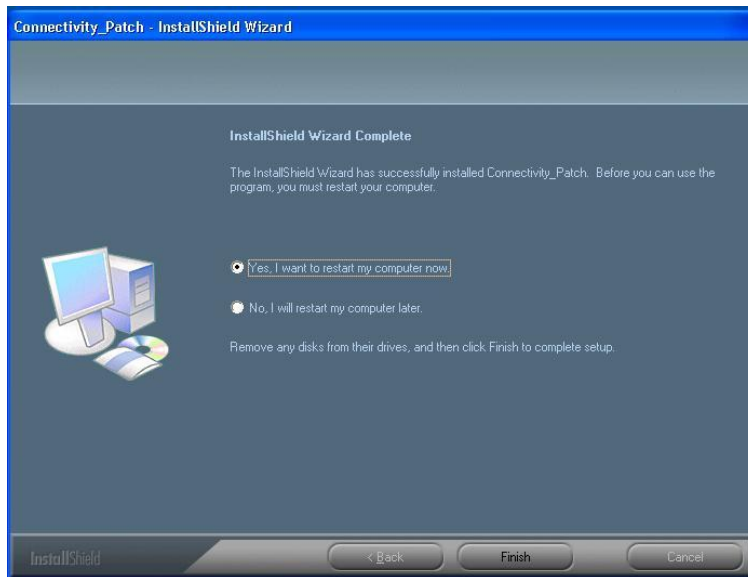
To resolve this problem, install the **Connectivity\_Patch** patch.

### Installing the patch

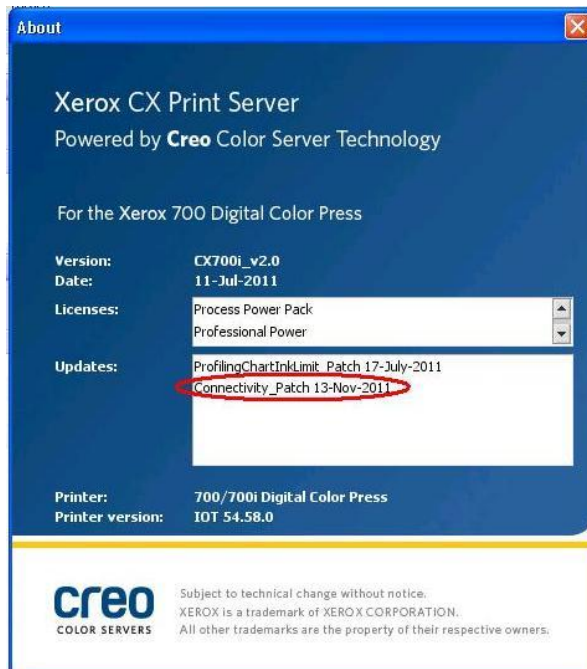
1. In the CX print server workspace, from the **File** menu, select **Exit**.
2. Download and save the **Connectivity\_Patch.exe** file to any location.
3. On the CX print server, locate and then double-click the **Connectivity\_Patch.exe** file.

**Note:** The patch installation process may take up to two minutes.

4. When the installation is completed, click **Finish**. The CX print server will restart.



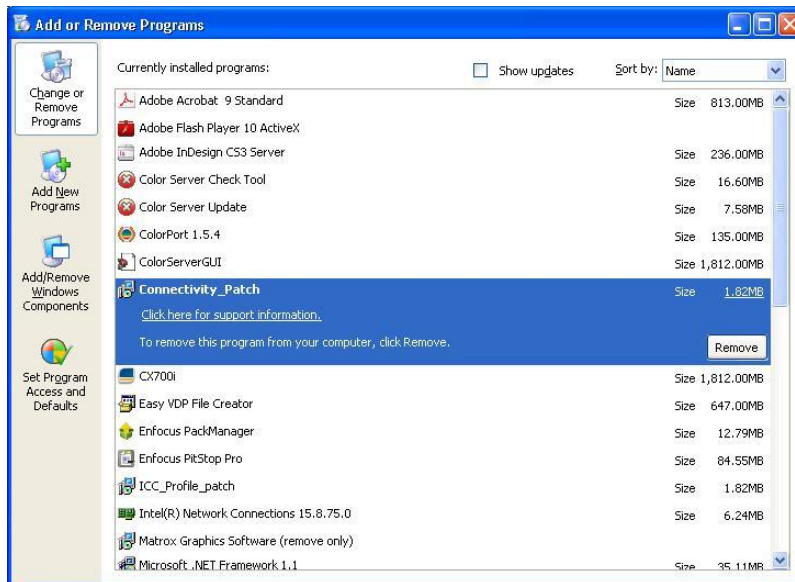
5. To verify that the **Connectivity\_Patch** is installed, perform the following actions:
  - a. From the **Help** menu, select **About**.
  - b. In the **Updates** box, make sure that **Connectivity\_Patch 13-Nov-2011** appears.



## Uninstalling the patch

Perform the following procedure to uninstall the **Connectivity\_Patch**.

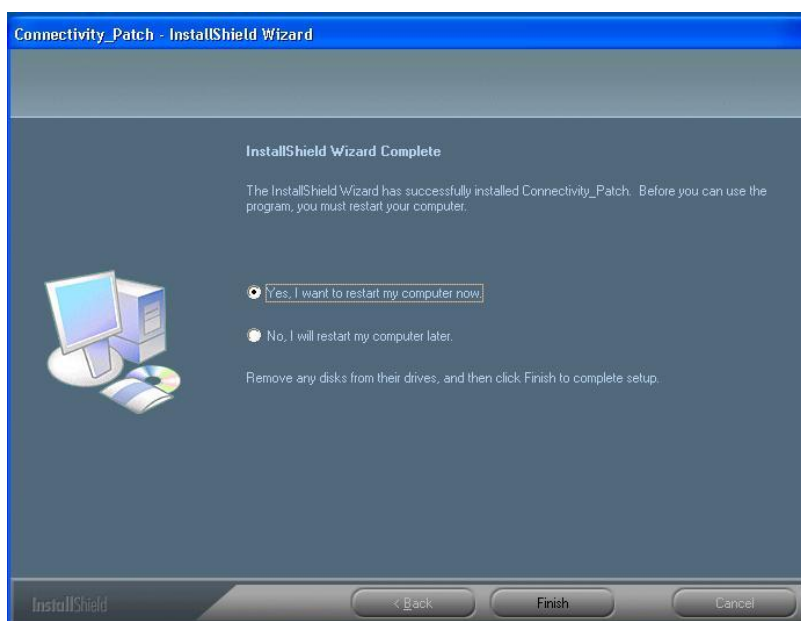
1. Exit the CX print server software.
2. From the **Start** menu, select **Setting > Control Panel**, and then double-click the **Add or Remove Programs**.



- From the **Currently installed programs** list, select the **Connectivity\_Patch** and then click **Remove**.



- Click **Yes**, to confirm removing the patch.



- In the InstallShield Wizard, click **Finish**.
- Start the CX print server software.
- From the **Help** menu, select **About** and verify that the patch was successfully removed.

## About Print On-Demand Solutions Group

The Print On-Demand Solutions Group develops high-performance CREO Color Servers and workflow solutions for a wide range of digital production printers and presses. CREO Color Servers offer the digital printing industry leading workflow connectivity solutions. They utilize intelligent, JDF-enabled automation of all print-production steps to help drive business performance and profit.

This independent unit of Eastman Kodak Company continues to unlock the power of print on-demand to maximize customers' success in digital printing and workflow solutions.

For more information about CREO Color Servers, visit [www.creoservers.com](http://www.creoservers.com).

© Kodak, 2011. All rights reserved. Creo is a trademark of Eastman Kodak Company. Adobe, Acrobat, Adobe Illustrator, Distiller, Photoshop, PostScript, and PageMaker are trademarks of Adobe Systems Incorporated. Apple, AppleShare, AppleTalk, iMac, ImageWriter, LaserWriter, Mac OS, Power Macintosh, and TrueType are registered trademarks of Apple Computer, Inc. Macintosh is a trademark of Apple Computer, Inc., registered in the U.S.A. and other countries. PANTONE, Hexachrome, PANTONE Goe, PANTONE Hexachrome, and PANTONE MATCHING SYSTEM are the property of Pantone, Inc. PEARL, PEARLsetter, PEARLhdp, PEARLdry, and PEARLgold are registered trademarks of Presstek, Inc. Technical data subject to change without notice.