

Release date: December 2007

Technical bulletin

CX260V2.0-SP1 ATS-Firmware patch

Problem description:

The ATS-firmware Patch for CX260v2.0-SP1 will fix the following issues:

- DC260/252/242 Auto tray switching problems
- Support for new Firmware 1.210.14 and 18.

Note: The patch must be installed on top of **CX260V2.0-SP1** only !

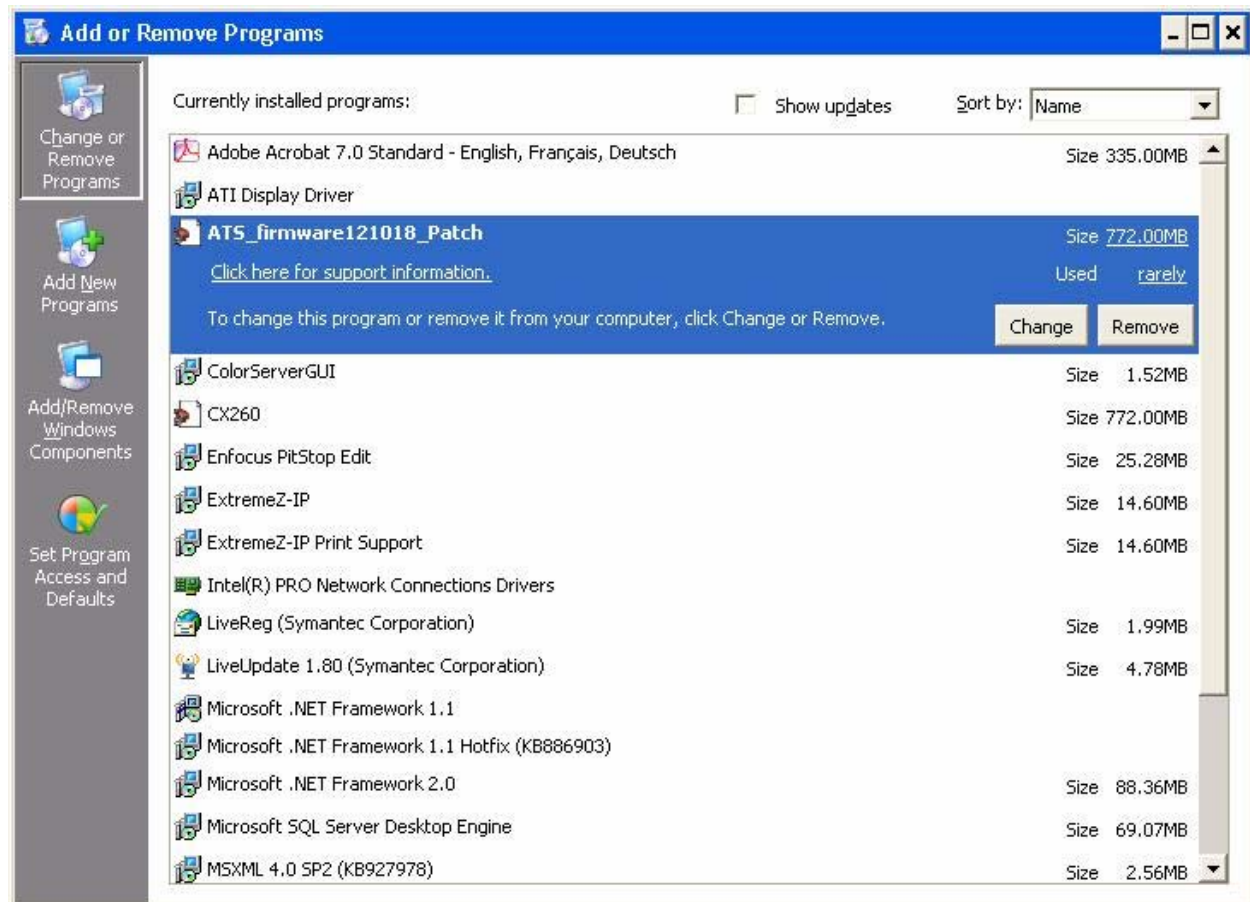
Installation instruction:

- 1) Logout from the Spire application
- 2) Double click on the **ATS_firmware121018_Patch.exe** file
- 3) Login to the application and confirm at the Help -> About that the patch was install. (See attach screen capture)



Uninstalling the ATS_Firmware patch

For uninstalling the ATS_firmware patch exit the Spire application and go to Start -> Setting -> Control Panel -> Add or Remove Programs, select the ATS patch from the programs list and select Remove.



About Creo Print On-Demand Solutions

The Creo Print On-Demand Solutions (Creo PODS) group develops high-performance digital color servers to drive a range of digital printers and presses. It also develops advanced on-demand applications to enable the creation of personalized direct mail, targeted catalogs, and other powerful one-to-one marketing communications.

The Creo PODS group is an independently managed unit within Kodak's Graphic Communications Group. Information about Creo PODS is available at www.creopod.com.

© 2006 Creo. The Creo product names mentioned in this document are trademarks or service marks of Creo, a subsidiary of Kodak, and may be registered in certain jurisdictions. Other company and brand, product, and service names are for identification purposes only and may be trademarks or registered trademarks of their respective holders. Data subject to change without notice.