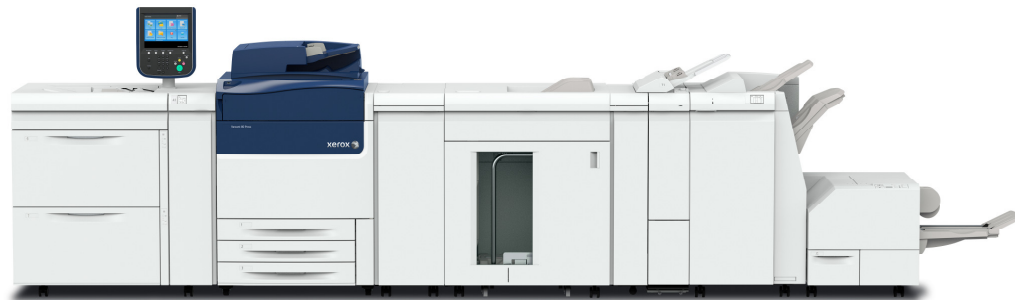


Xerox® Versant® 80 Press

Firmware Download Procedure

Version 80.32.83



© 2017 Xerox Corporation. All rights reserved. Xerox®, Xerox and Design®, Versant®, FreeFlow® and CentreWare® are trademarks of Xerox Corporation in the United States and/or other countries. BR21112

Document Version: 80.32.83a (February 2017).

Preface

This firmware release contains fixes and features added since the launch of the product in 2015. It is recommended to load this software for better machine performance.

Contents

1. Install Instructions	1-1
Loading Firmware Steps	1-1
2. Release Notes	2-1

1. Install Instructions

Loading Firmware Steps

1. Extract / unzip the .bin file from the zip file you downloaded from Xerox.com to a known location.
 - a. Access "www.xerox.com" and select "Support" on the main page.
 - b. Select: "**Support & Drivers**" and enter "**Xerox® Versant® 80 Press**" in the search field and "Enter"
 - c. Select the **Associated Product/Digital Front End** attached to your printer (no need to select the Operating System and Language), scroll down to the "**Firmware**" section and download the zip file called: "**Xerox Color Versant 80 System Software Maintenance Release v80.32.83**" to the location / media of your choice.
2. Depending of the Print Server used with the system, use step a, b or c to access the machines internal web pages:
 - a. If the system is using a Xerox® EX 80 Print Server, access the internal web page (Centerware®) by entering the IP address 100.100.100.101 into the Internet browser. The screen from Fig. 1 will appear.
 - b. If system is using a Xerox® FreeFlow Print Server, access the internal web page (Centerware®) by entering the IP address 100.100.100.101 in the Firefox Internet browser. The screen from Fig. 1 will appear.
 - c. If system is using a Xerox® 80 EX-i 80 Print Server, you need to access any Internet browser inside your firewall and type the IP address of the Fiery EX-I controller. Click on the Xerox CentreWare® link in the lower right corner of the Web tools page to access the machine internal web page (Centerware®). The screen from Figure 1 will appear.

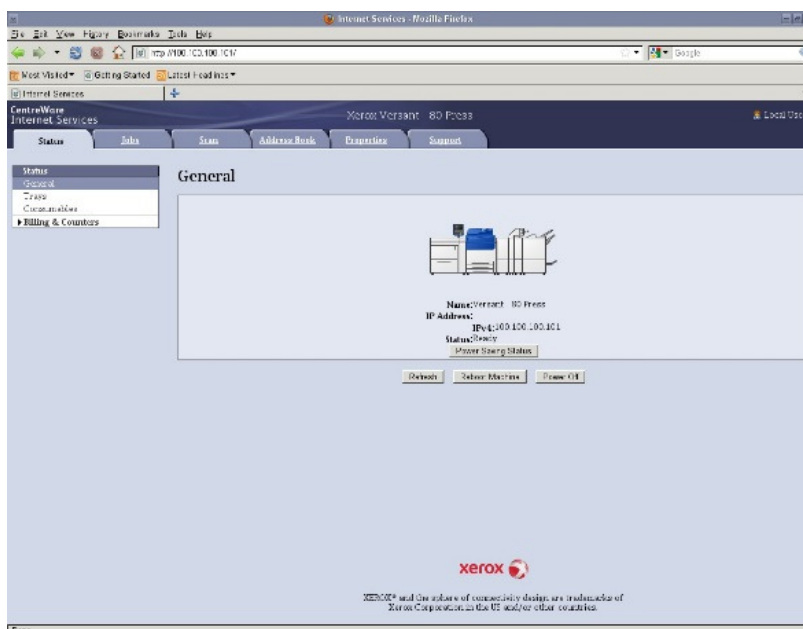


Figure 1

- Click on the Properties tab. If prompted, enter the User Name (default is admin) and the Password (default is 1111). Screen from Figure 2 will display.

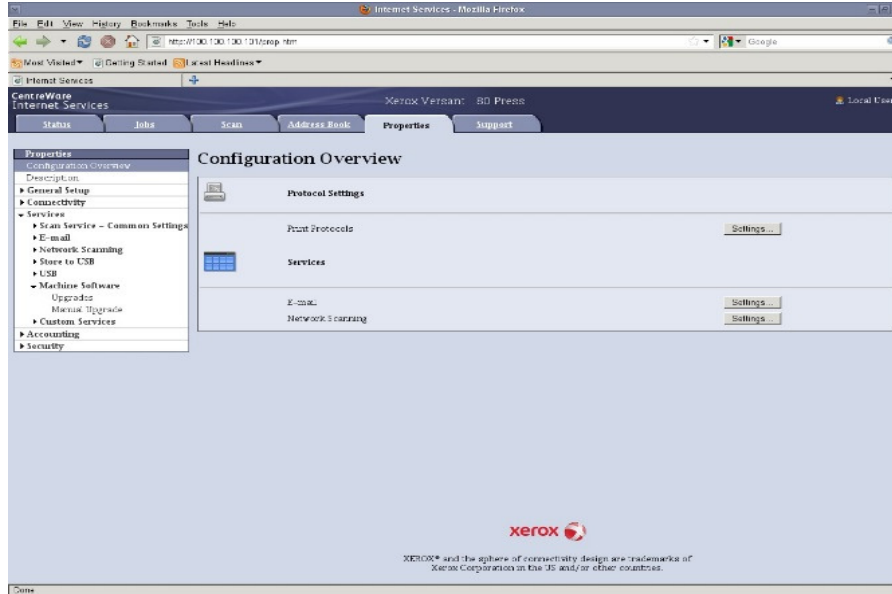


Figure 2

- Click on Services → Machine Software → Upgrades, place a check in the Enabled box and click “Apply”. See Figure 3 and 4.

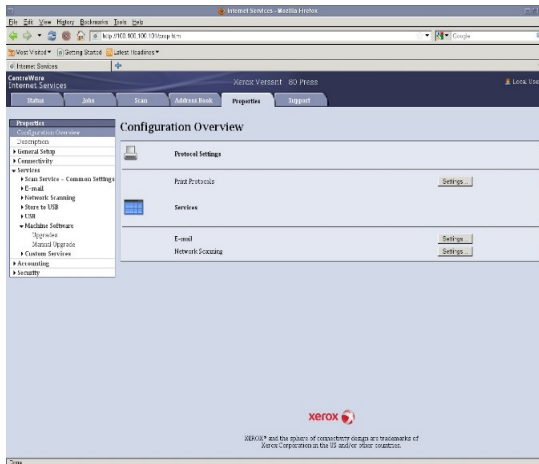


Figure 3

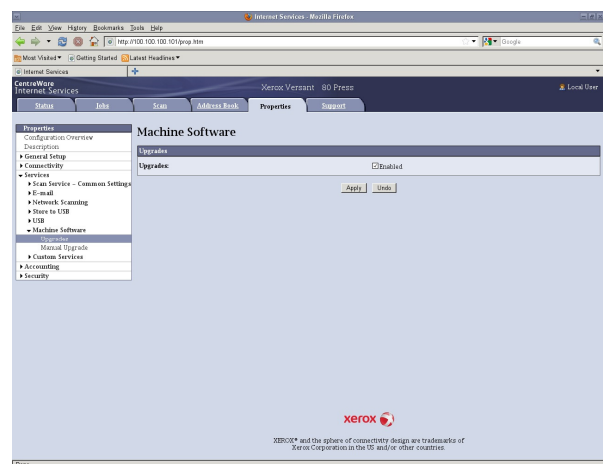


Figure 4

5. Select the Properties tab → Services → Machine Software → Manual Upgrade. The following screen will appear. (Figure 5)

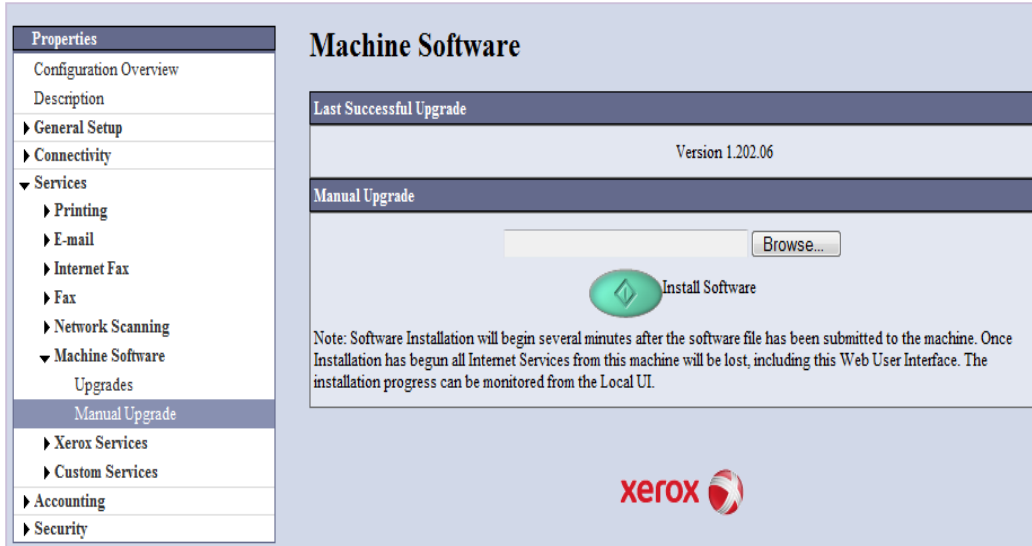


Figure 5

6. From the previously saved file in step 1c, unzip the firmware file.
 - d. Using the “**Browse**” button, navigate to the file called: “**V80_XC_803283_170210.bin**” from the previous step.
 7. Select the “**Install Software**” button.
- Note: The User Interface should display that the software download in progress and to not interrupt.**
8. The software will download to the device. The upgrade will take approximately 15 to 30 minutes. The device’s Local User Interface will indicate that the upgrade is being performed. Once the download is complete, the device will reboot.
 9. A software report sheet will be printed after the reboot, Go to Step 11. If the sheet did not print, access the following at the printer UI by selecting Machine Status → Print Reports → Printer Reports → Configuration Report.
 10. Ensure that the software version listed on the last page (Table 2) of the configuration report next to “System” is the software you just installed.
 11. Software upgrade is completed.

2. Release Notes

This software is a maintenance release with all the software bug fixes encountered since the launch of the product. The following problems/solutions were offered via software patches over the last 2 years and now part of this software. This list is only the top issues. Several other solutions are included in this release.

Proweb or SPAR #	Description
Proweb #3763	Fix for Extended "Adjust Image Quality" time after the user printed High Area Coverage documents.
Proweb #3822	Fix for Incorrect print output when using job builder in copy mode
Proweb #3757	Fix for 124-374 Fault Code when running out of toner with Foreign Interface Device (FID) fix installed.
Proweb #3647	Fix for the "Folding Adjustment" to work as expected.
Feature	Allow the Admin User to now change NVM's related to FPOT/FCOT when switching jobs from Color only to mixed B/W & Color.
Feature	Allow SIQA to run 8.x14 from Tray 5
Bug	SIQA > Save button on auto alignment with Matt coated paper is now working as expected.
Feature	Paper profile for Image Transfer now include "12"x18"" stock in the paper selection
Bug	RSEP (Remote Services) update for GRS support to include new SHA-2 certificates.
Bug	Color to Color Mis-Registration
Reliability	Power Saver maximum is now 30 minutes. If the original value is greater than 30 minutes, the UI will continue to display such value until the customer changes it. In such a case, the Print Engine will enter low/sleep mode at 30 minutes.

Table 1: Fix list

3- Software Release Details

System Software	Version number
System Software	80.32.83
Controller Software	1.203.16
IOT Software	55.38.0
HCF PF2.0 Software	10.1.0
HCF PF3.1 Software	20.22.0
HCF PF3.5 Advanced Software	24.109.0
IFM Software	20.3.0
Finisher C Software	5.5.0
Finisher D5 Software	5.49.0
HCS Software	2.15.0
DADF Software	13.22.0
UI Panel Software	10.16.4

Table 2: Software Version